

New!

All the greatest buildings
of the 21st century

THE
PHATDON
ST
WORLD
ARCHITECTURE
PHATDON

PHATDON

NEW!

**All the greatest buildings
of the 21st century**

105°

120°

135°

150°

165°

180°

1,037 Buildings

244 Single Houses

18 Libraries

63 Schools

8 Embassies

653 Architects

11 Art Galleries

28 Hotels

76 Museums

6 Railway Stations

6 Geographical Regions

7 Swimming Pools

2 Town Halls

57 Office Buildings



89 Countries

38 Universities

8 International Airports

90°

75°

60°

THE PHAIDON ATLAS OF 21ST CENTURY WORLD ARCHITECTURE

The Phaidon Atlas of 21st Century World Architecture presents, in one volume, more than 1,000 of the most outstanding works of architecture built since 2000 all over the world

Places the work of internationally acclaimed architects alongside those currently unknown outside their own country and that of the next generation of emerging architectural stars



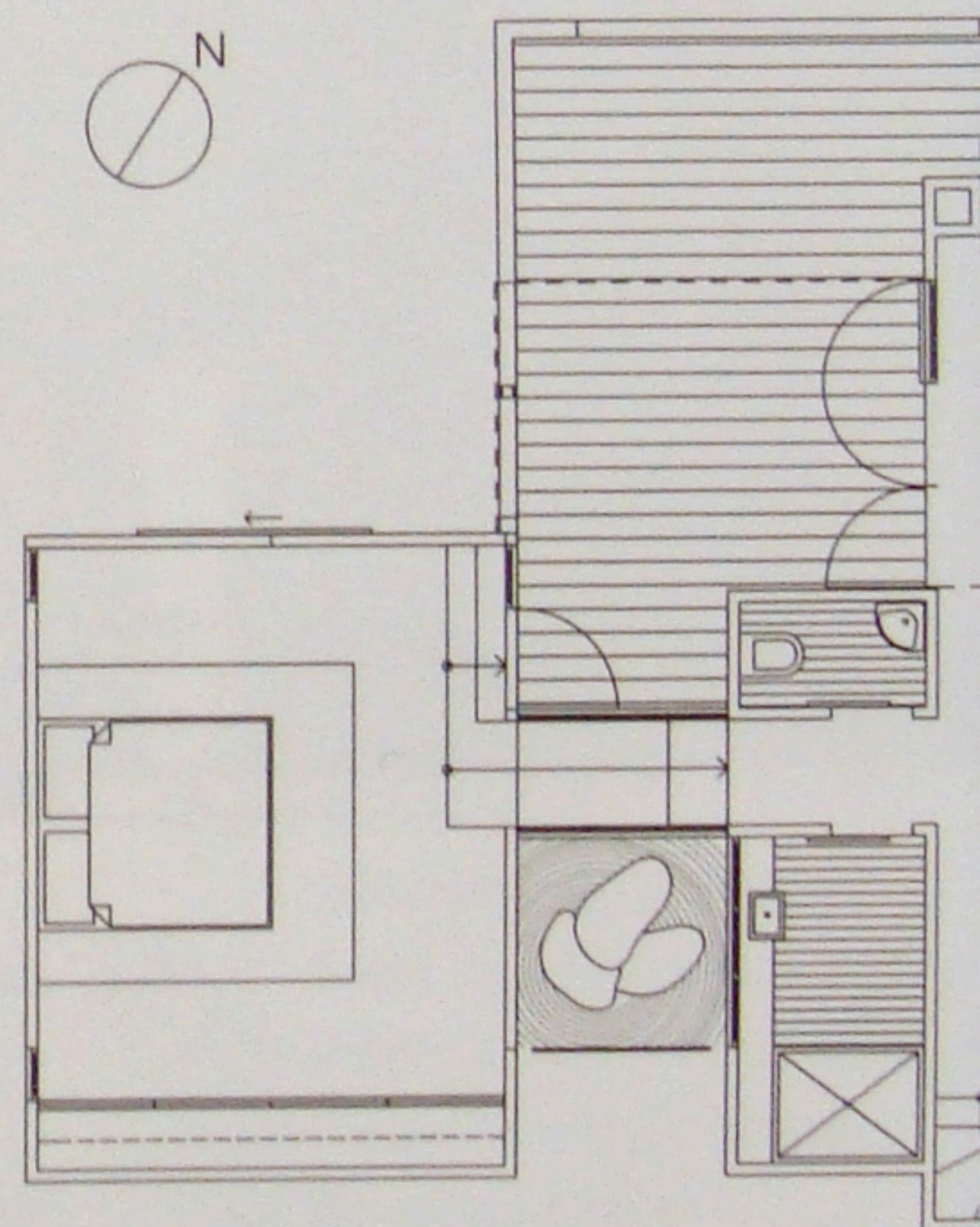
1

0045 Bounded on two sides by public reserves, the Hughes/Kinugawa House is set on a tiny cliffside block at the end of a cul-de-sac in Waterview, Auckland. Overlooking the Northwestern Motorway bridge across the Waitemata Harbour, the site slopes steeply towards the water, where a mangrove swamp appears at low tide. The house is integrated with ancient Japanese 'Direct Compass' Feng Shui concepts. Clad entirely in cedar weatherboards, the house is designed to weather over time. The plan

consists of three zones, which provide viewing opportunities and unfolding spatial experiences. The building becomes more private as it approaches the street, where the facade is closed. In contrast, large windows facing the view in the double-height living room invite the landscape inside to create a sense of space. Windows highlighting snippets of the view interrupt a room-height bookcase. Upstairs, a mezzanine study and guest room also access the views. Overlooking the living rooms, a ledge table



2



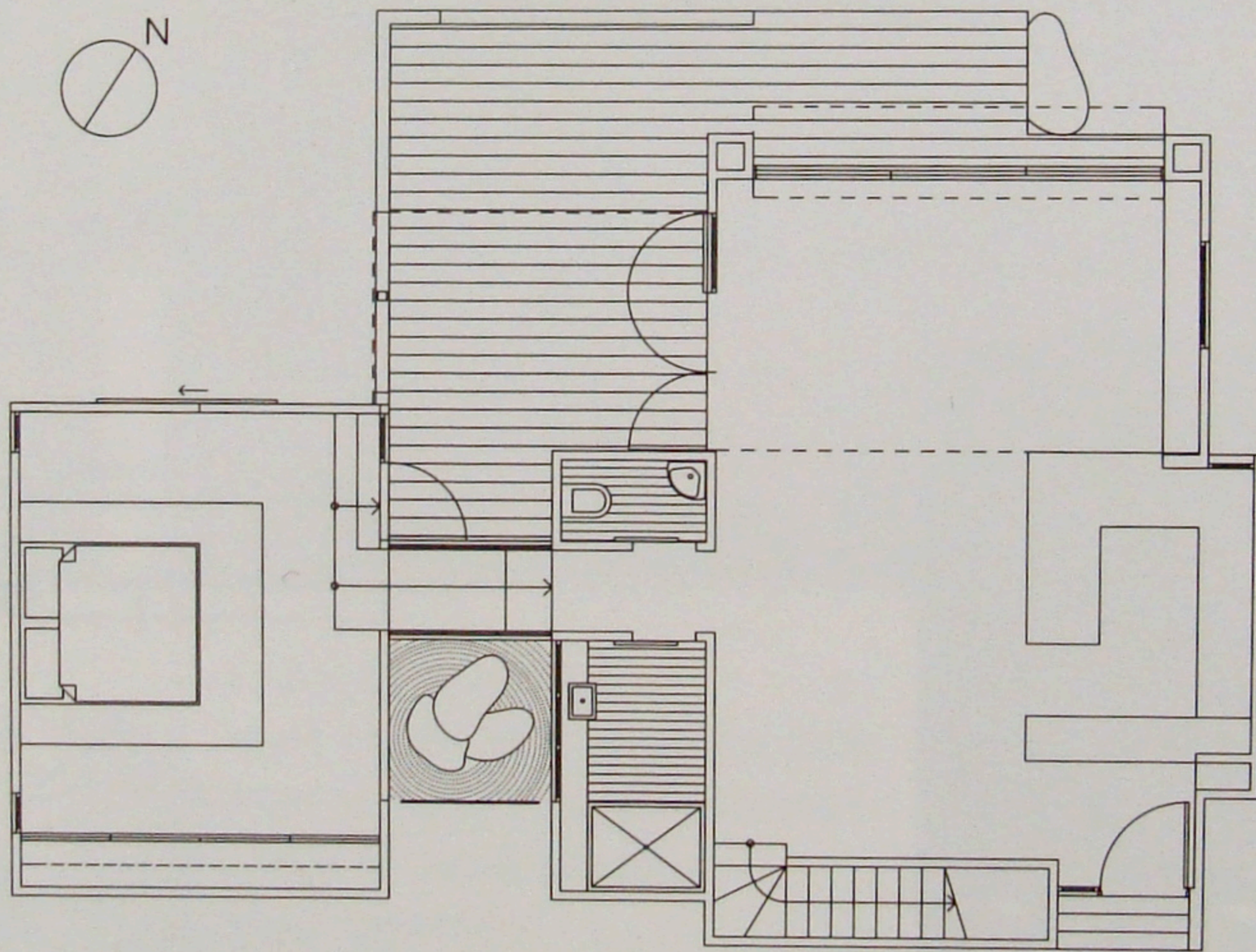
4

doubles as a handrail. For good accessibility, a 1.8 m (5.9 ft) passage accommodates a bathing pod that separates the living and sleeping spaces. With its own private garden, the bathroom is clad in aromatic cypress timber. In the living pavilion, a large window opens onto a porch so that the wall becomes a screen. A low-level window visible from the bed frames the ground of the garden. The bedroom also accesses the living deck which leads down



2

3



4

5

three zones, which provide opportunities and unfolding spatial experiences. The building becomes more open as it approaches the street, where the garden is closed. In contrast, large windows overlooking the view in the double-height living area invite the landscape inside to create a sense of space. Windows highlighting the view interrupt a room-height wall. Upstairs, a mezzanine study and bedroom also access the views.

doubles as a handrail. For good Feng Shui, a 1.8 m (5.9 ft) passage accommodating the bathroom separates the living and sleeping spaces. With its own private Zen garden, the bathroom is clad in waterproof, aromatic cypress timber. In the sleeping pavilion, a large window opens almost into a porch so that the wall becomes a handrail. A low-level window visible from the bed frames the ground of the Zen garden. The bedroom also accesses an outdoor living deck which leads down to a Japanese

style garden populated mostly with New Zealand vegetation and local basalt rocks.

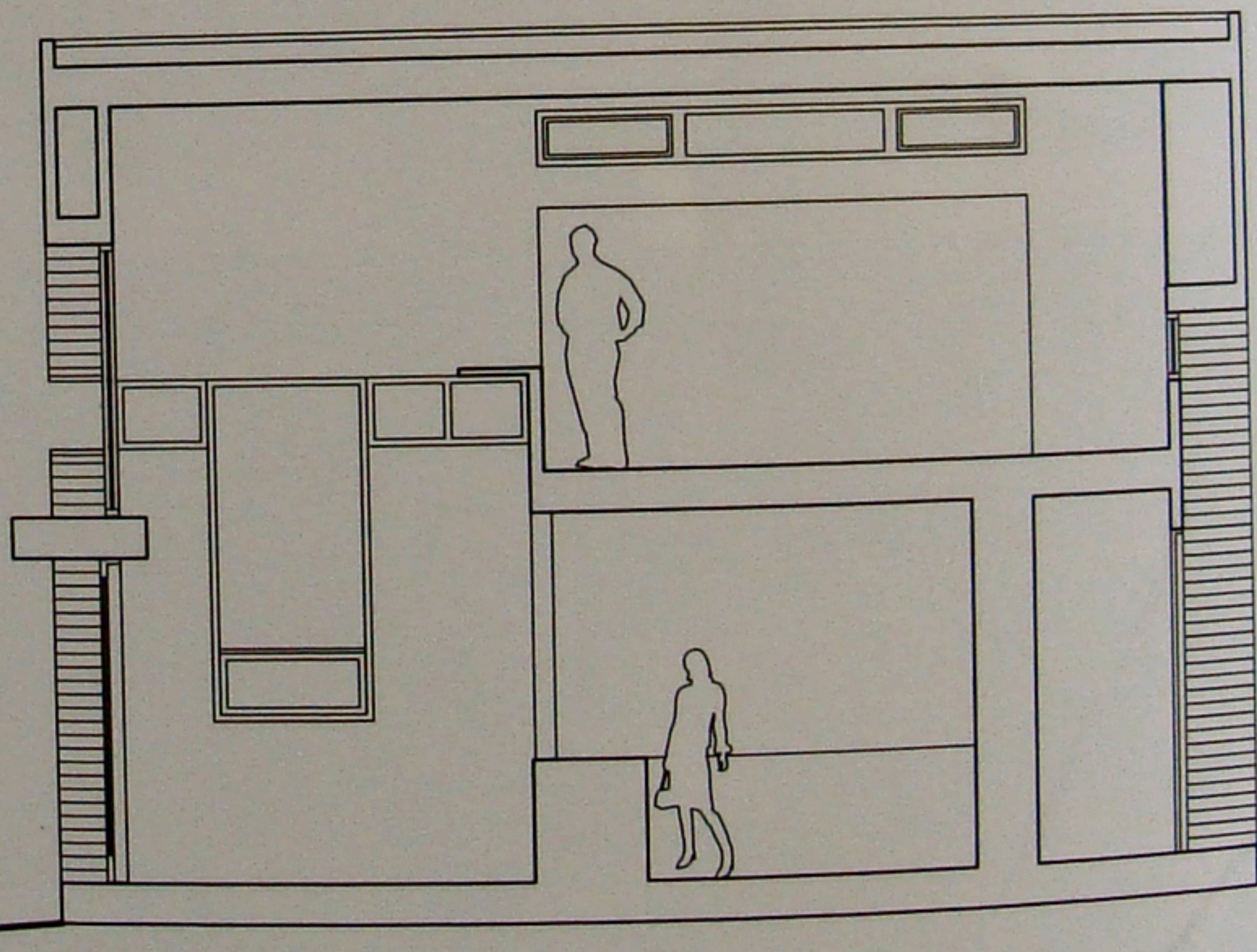
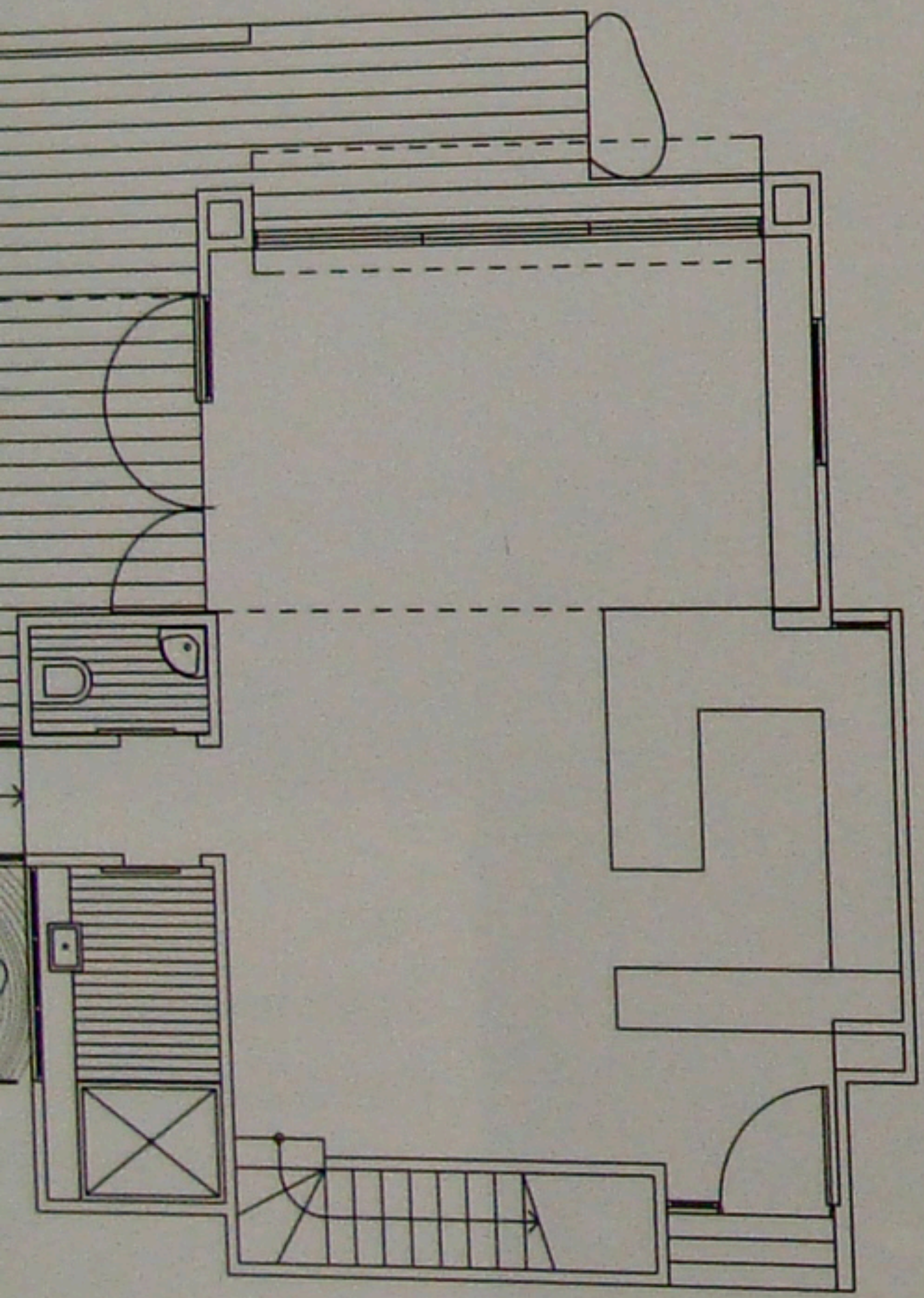
- 1 Northwest facade of building
- 2 View towards Waitemata Harbour
- 3 Double-height bookcase
- 4 Ground-floor plan
- 5 Section through building

and steps down to
s. Glazing opens a corner
that the room expands into

5 Section through building



3



5

drail. For good Feng Shui,
assage accommodating the
eparates the living and
. With its own private Zen
room is clad in waterproof,
s timber. In the sleeping
window opens almost into
the wall becomes a handrail.
ow visible from the
ground of the Zen garden.
Also accesses an outdoor
ch leads down to a Japanese

style garden populated mostly with native
New Zealand vegetation and locally sourced
basalt rocks.

- 1 Northwest facade of building
- 2 View towards Waitemata Harbour
- 3 Double-height bookcase
- 4 Ground-floor plan
- 5 Section through building

Client
Confidential
Area
130 m²/1,399 sq ft
Cost
US\$218,333
Coordinates
-36.8772 174.6948