

# Wallpaper\* future 30

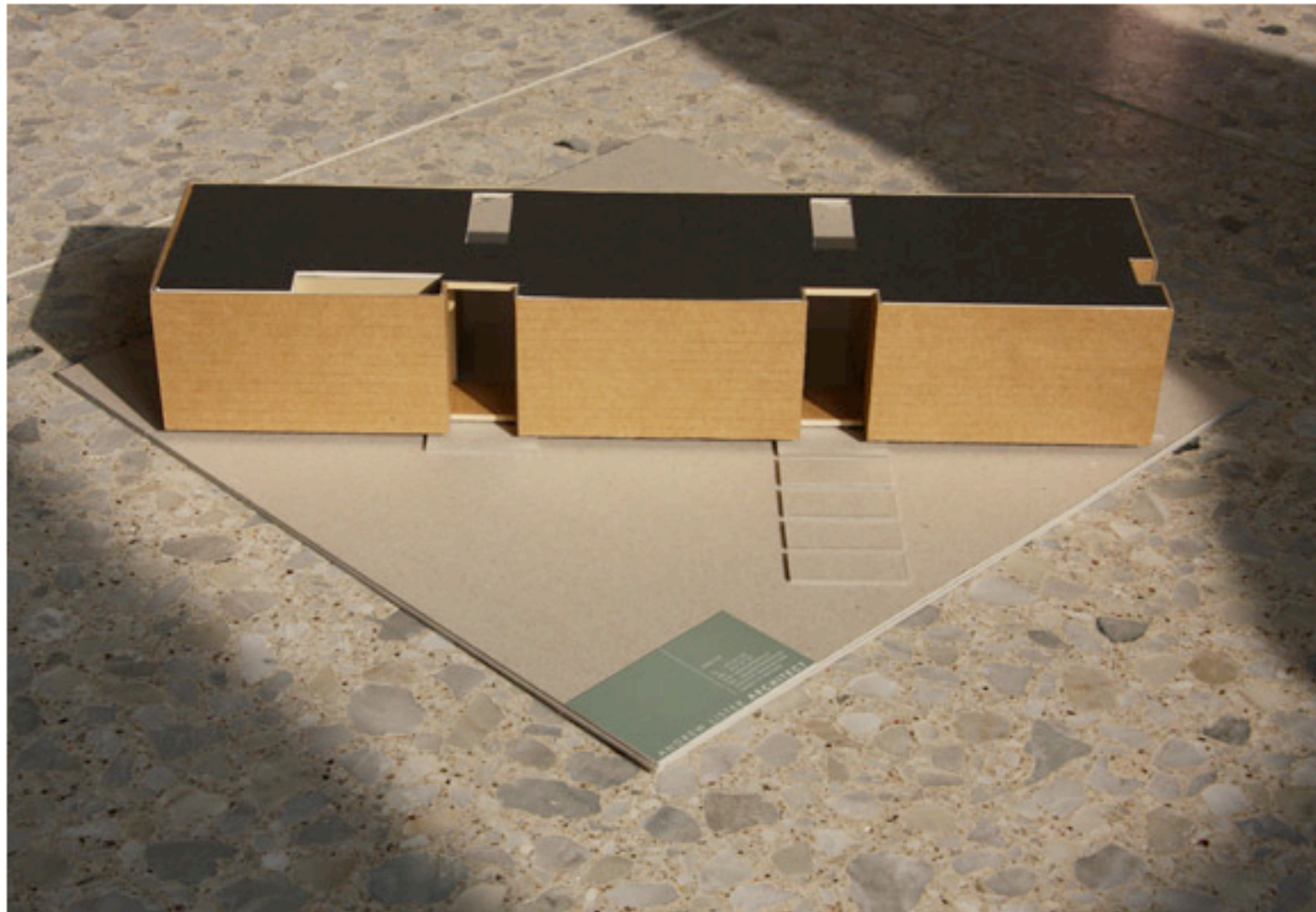
---

## MODELS ▲

- 11 Reigo & Bauer Spec House 03
- 12 André de França e Campos e Joana Mendes Untitled
- 13 Andrew Lister Architect The Module House
- 14 Anagram Architects The Interstice-2 House

## Architects Directory 2009

[Back to group shot](#)



[View more work](#)

### Andrew Lister Architect

New Zealand

#### BIOGRAPHY AND PRACTICE

41-year old Lister studied in Auckland University Architecture School and worked in London and New Zealand – at Cook, Hitchcock and Sargisson, and Richard Priest Architects - before setting up his one-man practice in 1999. Slowing down his work life in 2005 to devote more time in his young family, he only works on one or two carefully selected projects a year. Inspired equally by his world travels and the marvels of nature, and by the energy of his clients, he also respects American architect Rick Joy and "the new breed of modern European and Japanese Architects and their beautiful ways of using timber in building."

#### THE HOUSE

Lister calls this project "The Module House", and for good reason. "The house is a set of standardized units used to construct a more complex structure. Each module is connected by an entry link, which forms a spine through the structure. More modules are added as more bedrooms are required", he explains. The architect finds modulation one of the most efficient ways to construct for mass production, as well as making designs easily adaptable. The house also uses recycled timber for the cladding and floor, as well as double glazing and wool cavity insulation for low energy consumption.

#### THE FUTURE

Aiming to be as consistent as possible in his approach, Lister acknowledges that each commission is also hugely dependent on the respective client, the site and the brief, so his designs always adapt to cover these needs. He doesn't like to "embrace trends", although he feels it is important to follow and adopt new technologies, especially those that can survive in New Zealand's harsh climate. He is committed to continuing his focus on residential design, but he also wants to work on small civic buildings and work abroad.

[www.andrewlisterarchitect.com](http://www.andrewlisterarchitect.com)

### Models



SPG architects  
USA



Scot DiStefano  
architecture  
USA



Studiomama  
United Kingdom



Platform 5 Architects  
United Kingdom



Liddicoat & Goldhill  
United Kingdom



Gort Scott



Jürg Schmid



Group 8



Marge Arkitektur



Arquitecto Martin

09

10

11

12



24

25

26

27

# Wallpaper\* future 30

## MODELS PICTURED Y

- 01 Jürg Schmid Architekten The Diamonds Are Forever House
- 02 Gort Scott The Nolli House
- 03 Divercity Architects Envelope House
- 04 H2O Architectes Chacun Chez Soi Et Tous Ensemble
- 05 Propeller Z The Wallpaper\* Case Study House
- 06 Liddicoat & Goldhill The Open Book House
- 07 FGMF Arquitetos Tic-Tac House
- 08 Martin Lajerraga Arquitecto The House In The Dry Pool
- 09 Cell Space Architects The Revolving Walls House
- 10 González/Larraín Arquitectos Jerdes House
- 11 Reigo & Bauer Spec House 03
- 12 André de França e Campos e Joana Mendes Untitled
- 13 Andrew Lister Architect The Module House
- 14 Anagram Architects The Interstice-2 House
- 15 SPG Architects Sherman House
- 16 Marge Architektur The House Marge
- 17 Antonino Cardillo Architect Lime and Limpid Green House
- 18 Studiomama The Square Log House
- 19 Bruno VanBesien Architect Tetris House
- 20 Scot DiStefano Architect Pyrginae House
- 21 ALA Focal House
- 22 MooMoo Architects Houseview
- 23 Phorm Architecture + Design 26 30"01' South
- 24 Tierney Haines Architects South House
- 25 Platform 5 Architects The Courtyard House
- 26 X Architekten Pimp Up Your Roof
- 27 Group 8 The Weph House



**FUTURE PERFECT**

Photographed at David Chipperfield's reconstruction of the Neues Museum in Berlin, representatives from 30 of the practices whose concept homes are featured in the Wallpaper\* Future Thirty exhibition



**Wallpaper\*  
future 30**

- 01. [illegible]
- 02. [illegible]
- 03. [illegible]
- 04. [illegible]
- 05. [illegible]
- 06. [illegible]
- 07. [illegible]
- 08. [illegible]
- 09. [illegible]
- 10. [illegible]
- 11. [illegible]
- 12. [illegible]
- 13. [illegible]
- 14. [illegible]
- 15. [illegible]
- 16. [illegible]
- 17. [illegible]
- 18. [illegible]
- 19. [illegible]
- 20. [illegible]
- 21. [illegible]
- 22. [illegible]
- 23. [illegible]
- 24. [illegible]
- 25. [illegible]
- 26. [illegible]
- 27. [illegible]
- 28. [illegible]
- 29. [illegible]
- 30. [illegible]

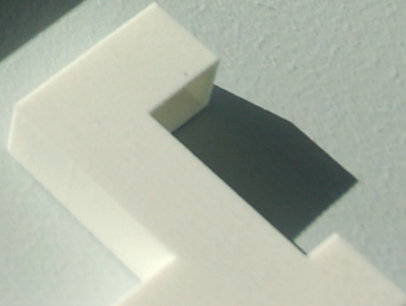
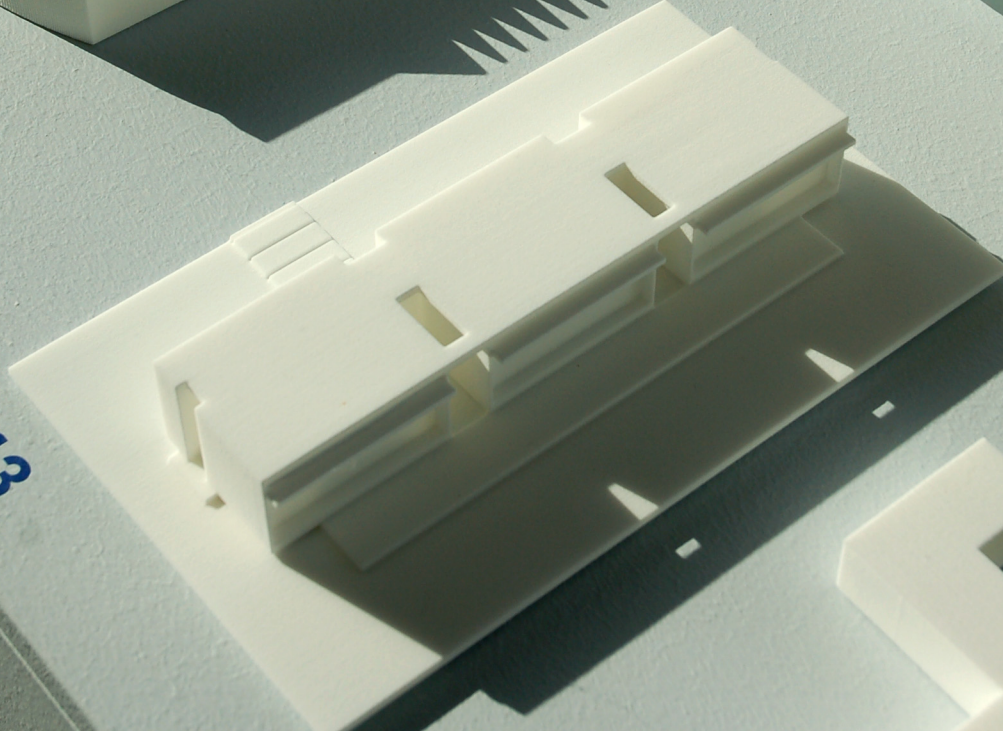
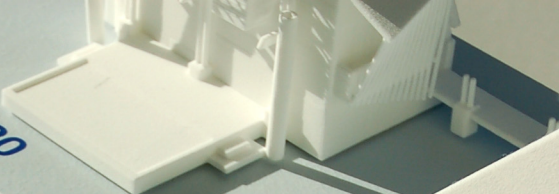
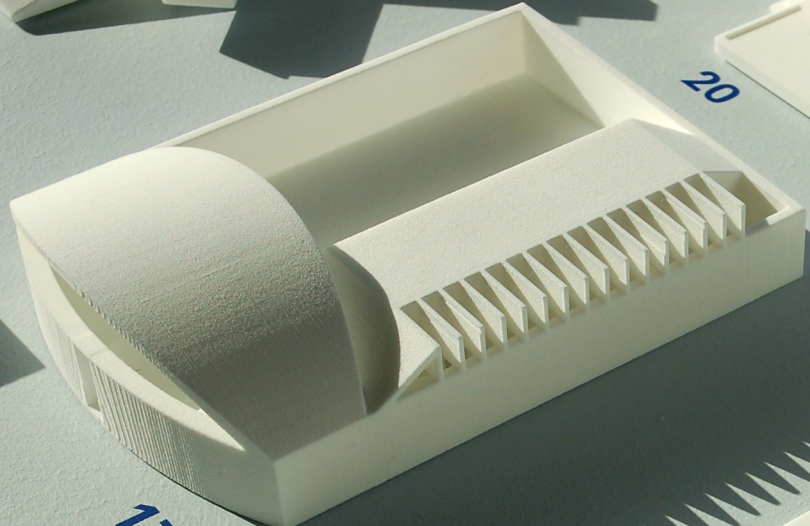
15

20

17

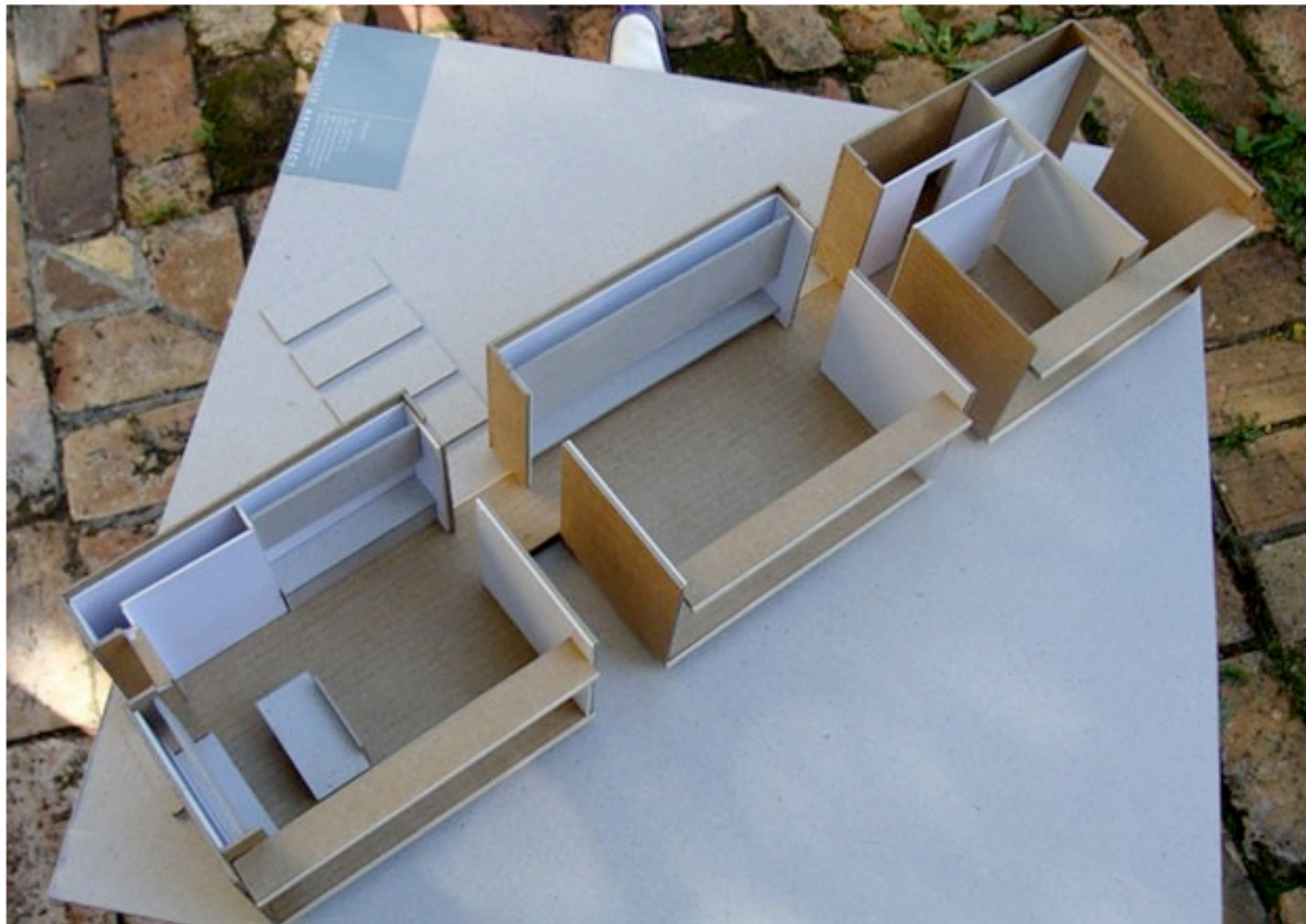
13

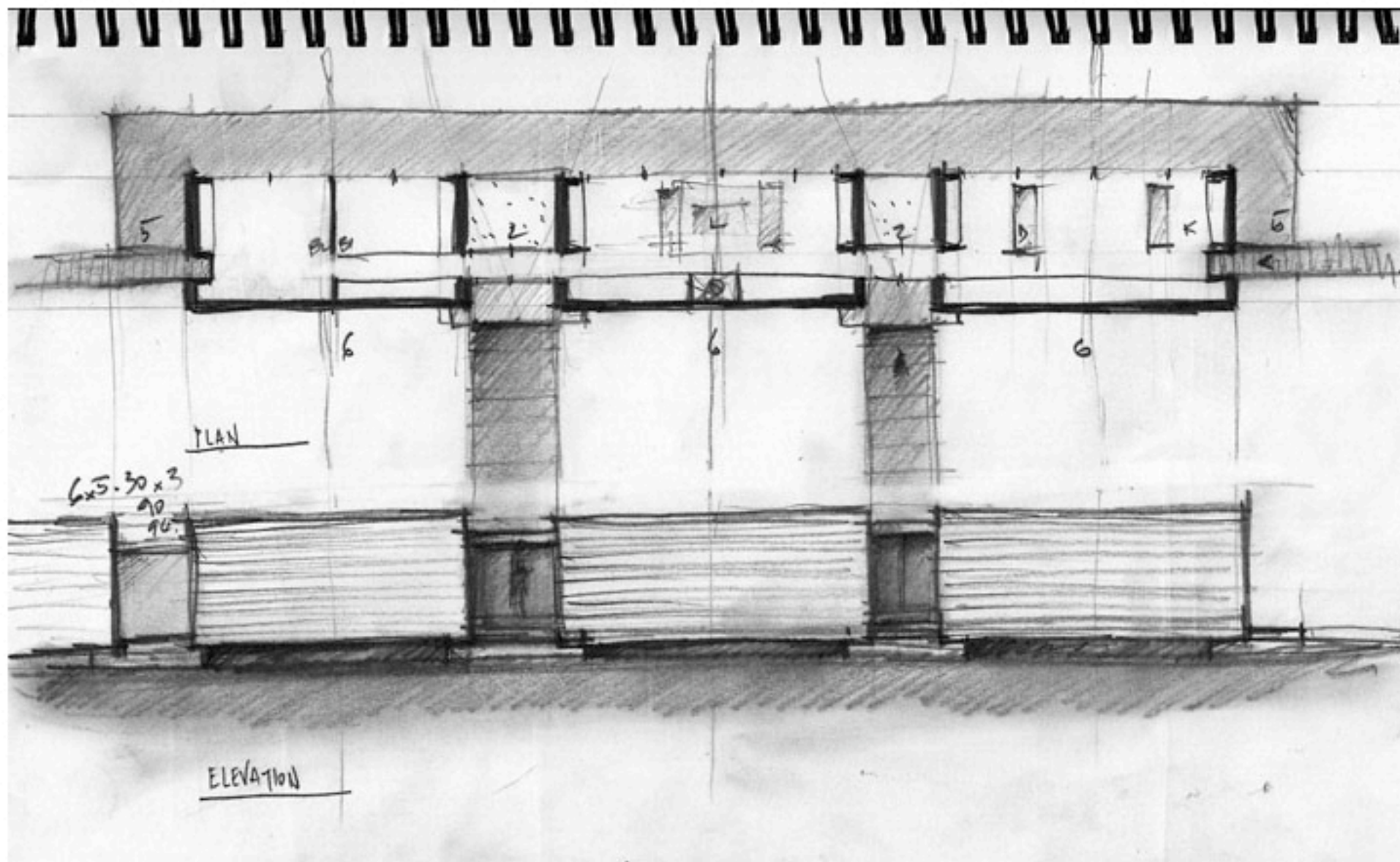
16





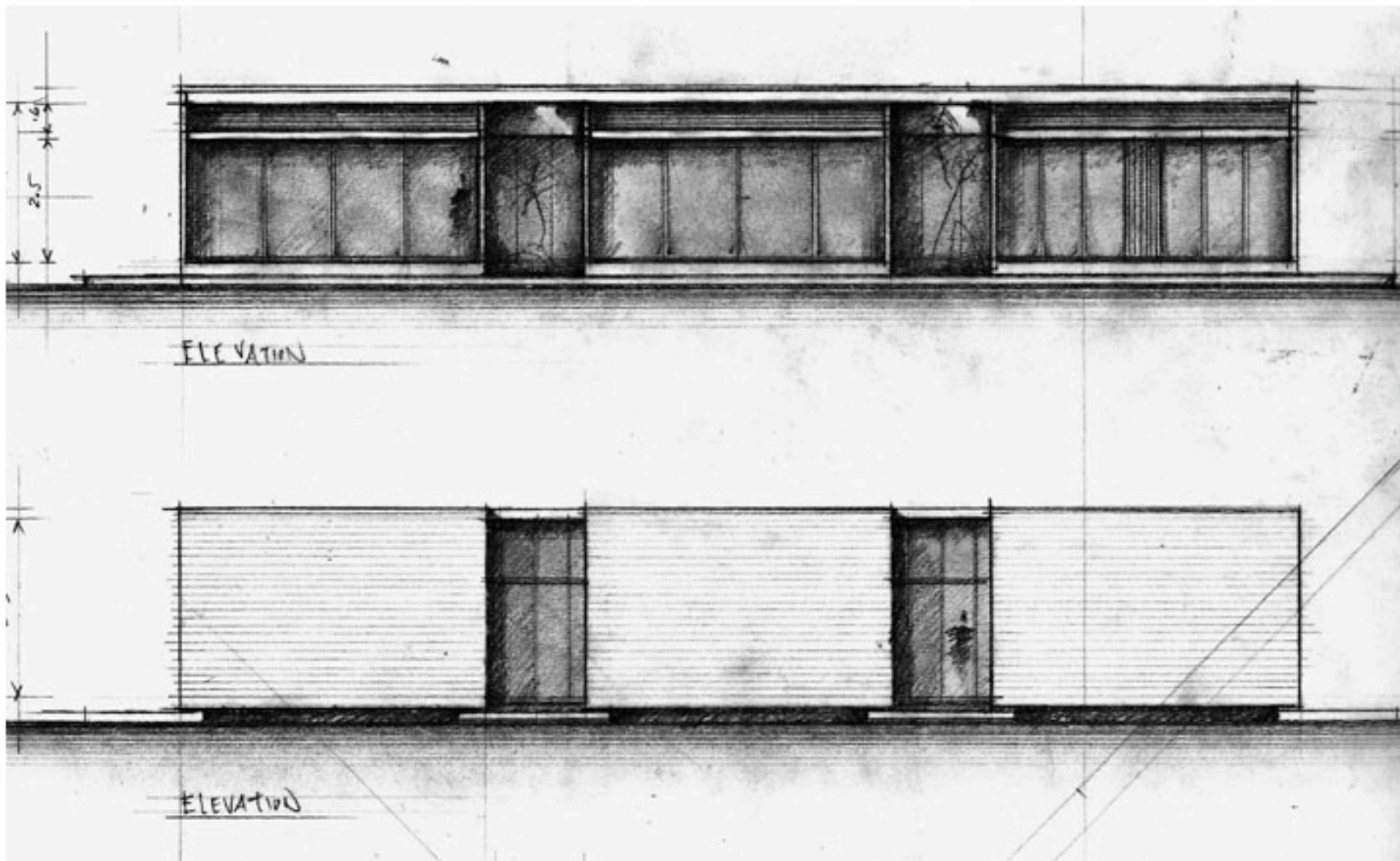
Andrew Lister's bespoke house for the 2009 Wallpaper\* directory: The Module House





The Module House by Andrew Lister, concept sketch





The Module House by Andrew Lister, elevations

